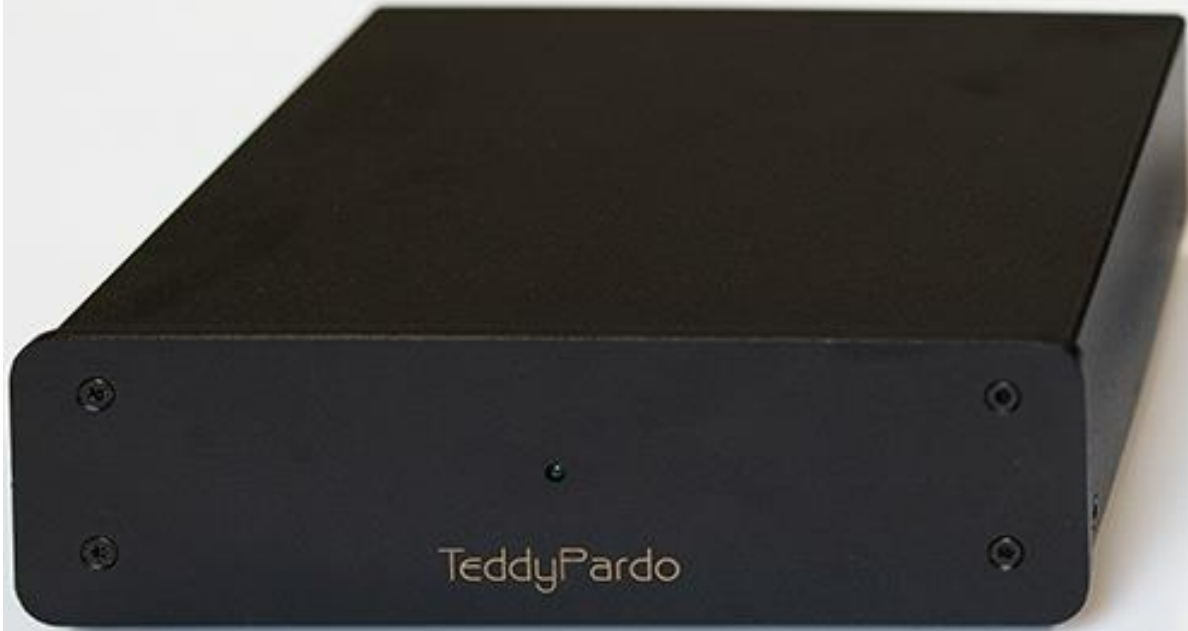


Teddy Pardo Eversolo Conversion Kit  
Quick Startup Guide

TeddyPardo  
THE ART OF SILENCE

# What's included



- TeddyPardo dedicated power supply.
- Panel adapter wired with DC plug
- DC cable
- Torx key

# Before you Start!

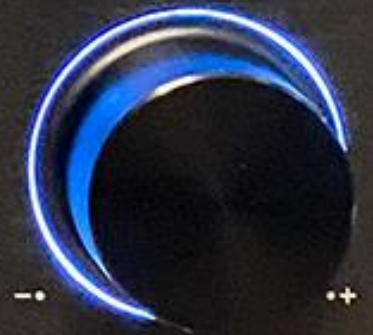
TeddyPardo

The DMP-A6 uses a very thin ribbon-type cable to connect the front panel. Care must be taken to avoid any damage to this wire by overstretching it. If you are not confident about handling this, may we suggest that you approach a tech person.

ever  
SOLO

DMP-A6

⏻ PUSH



VOLUME



Step 1: Place the device upside down, remove 7 screws holding the bottom chassis, using the torx key.

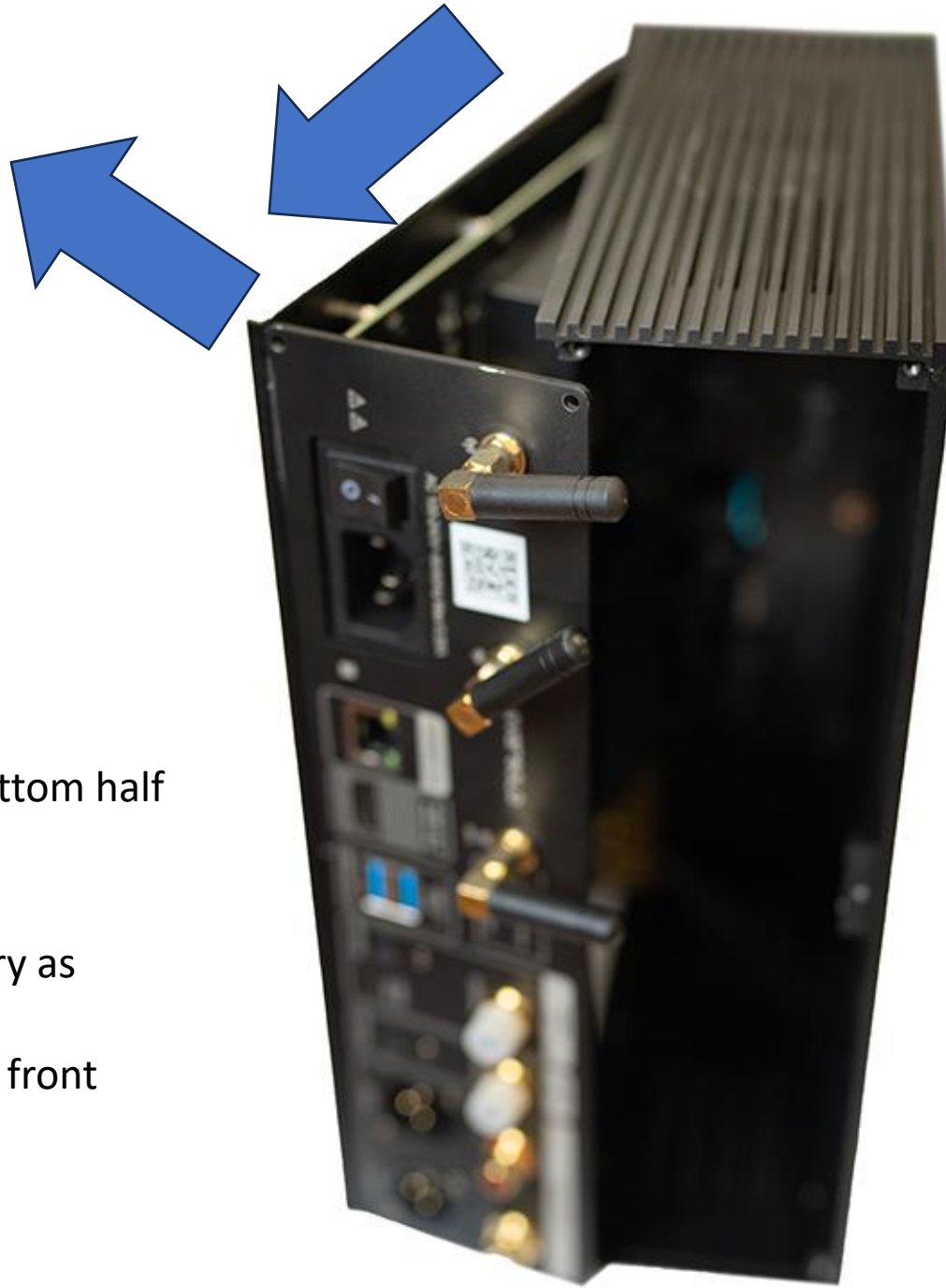
- Make sure to keep the screws in an empty cup.
- Do not remove the SSD holding screw.



Step 2: place the device on its side, power entry socket facing upwards. Keep it on its side throughout the conversion process.

Remove 6 screws holding the back panel.





---

Step 3: Holding the top cover firmly, pull the bottom half slightly backwards and to the side.

- Do not use force.
- Keep the front side of the device as stationary as possible.
- Opening the device forcefully may break the front panel ribbon wires!

**Result of step 3.** note the fragile ribbon wires at the right side of the picture.

Make sure those wires are not overstretched, and in any case, do not touch those wires.



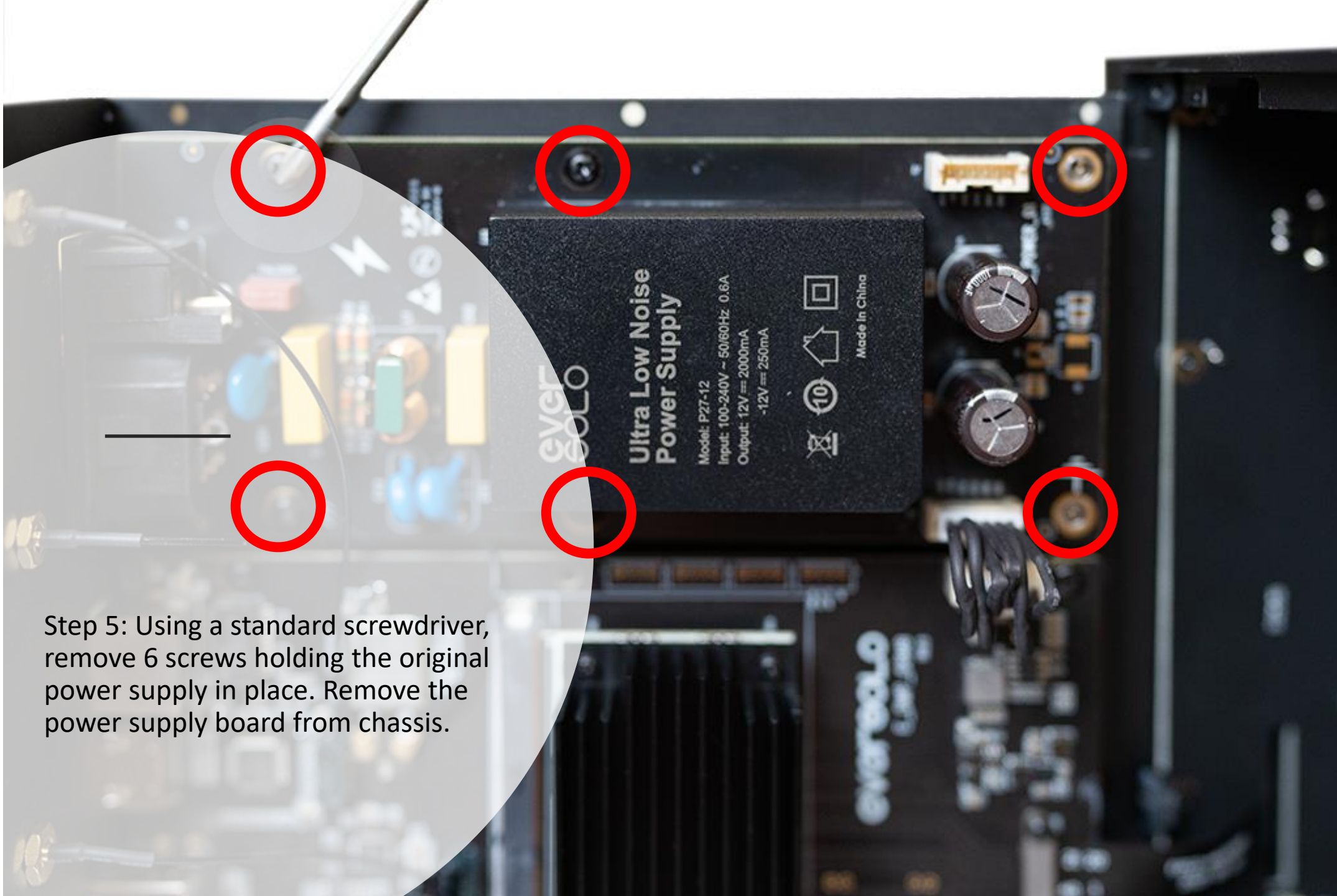


Step 4: hold the power supply connector to unlatch it, then disconnect the supply cable from the main board.

- Do not apply force.
- No need to disconnect the cable from the power supply board.





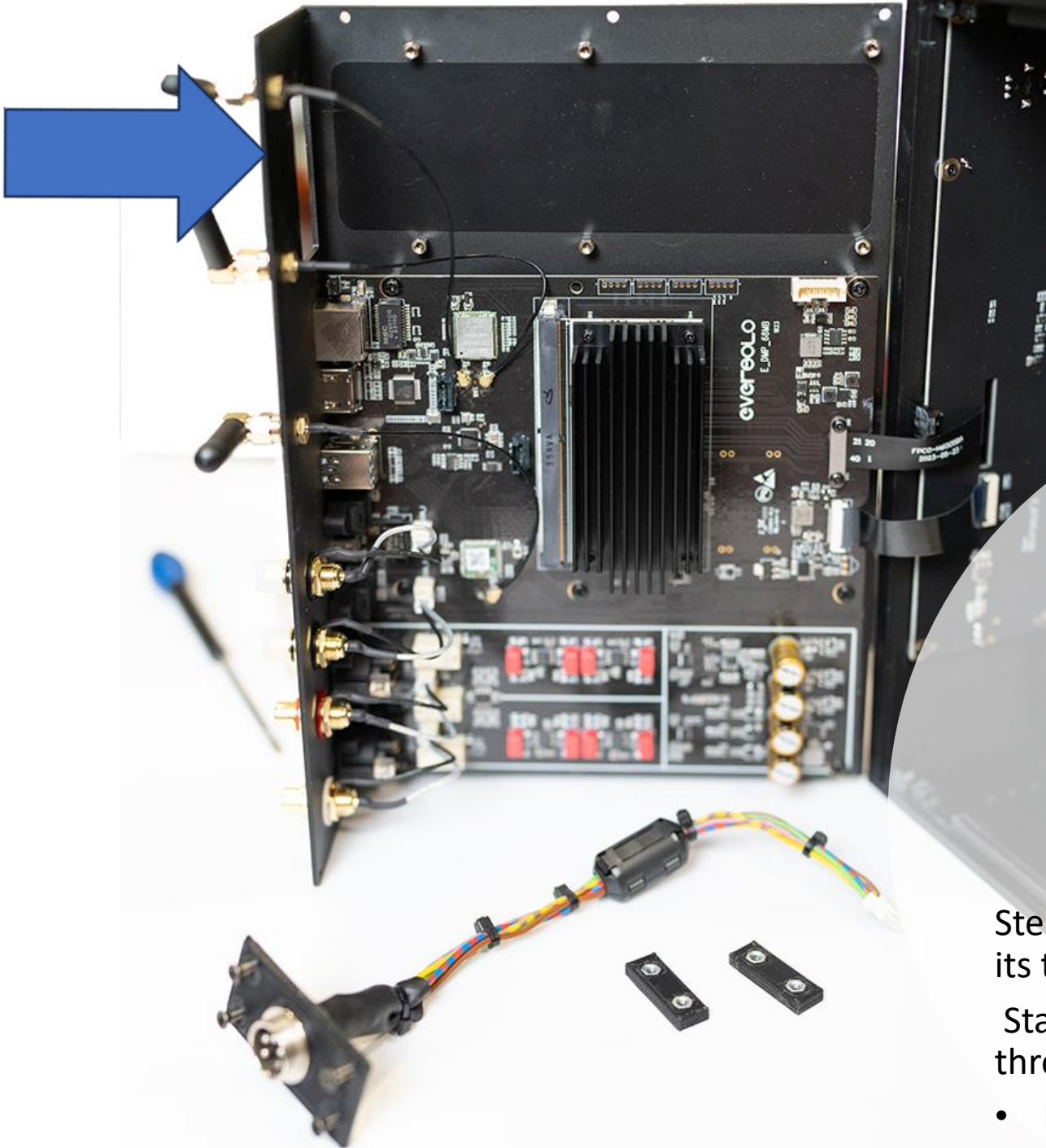


Step 5: Using a standard screwdriver, remove 6 screws holding the original power supply in place. Remove the power supply board from chassis.

Result of step 5.







---

Step 7: Prepare the panel adapter and its two bracings.

Start by inserting the wire harness through the power entry opening.

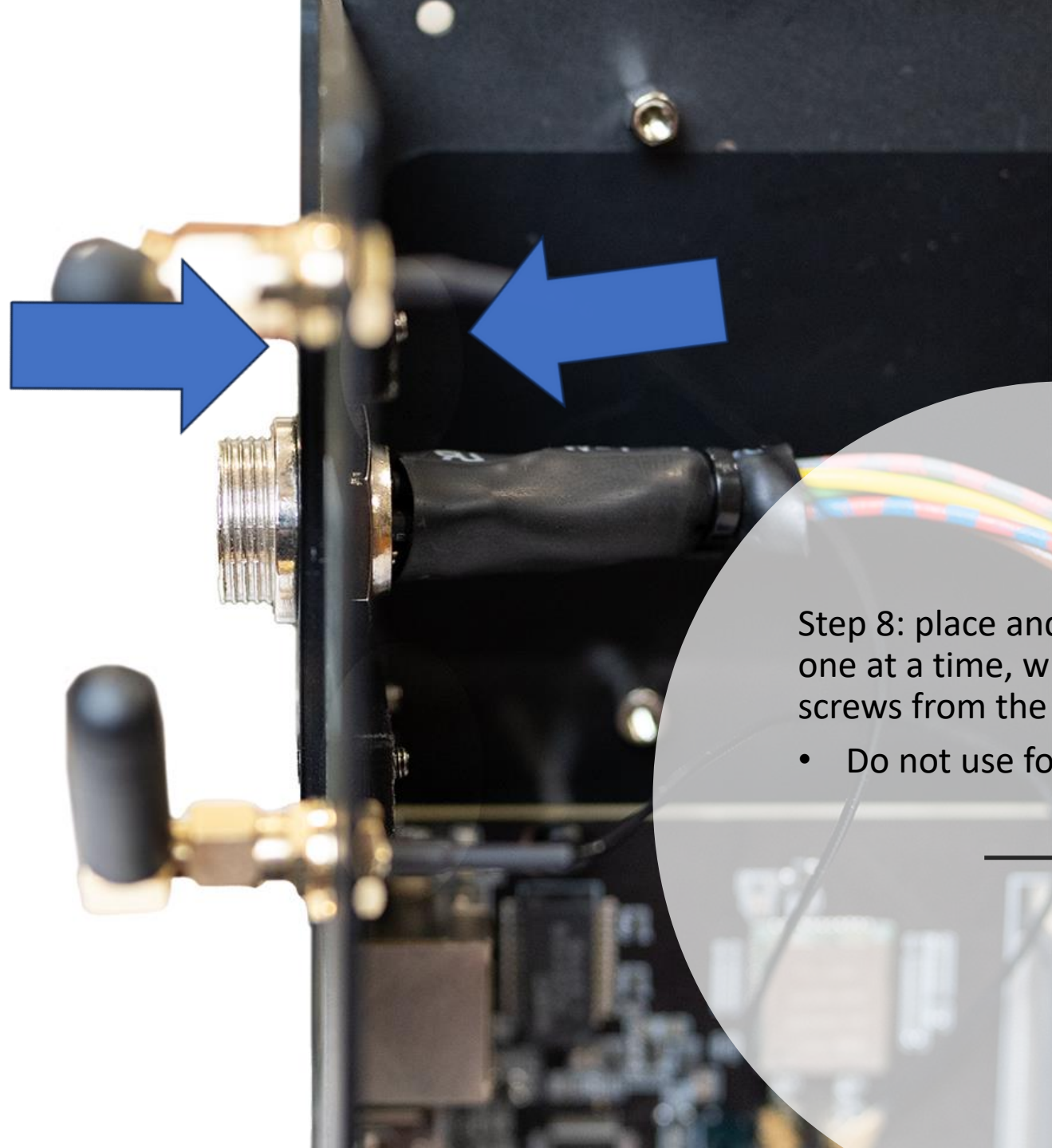
- **Keep the device steady on its side.**



---

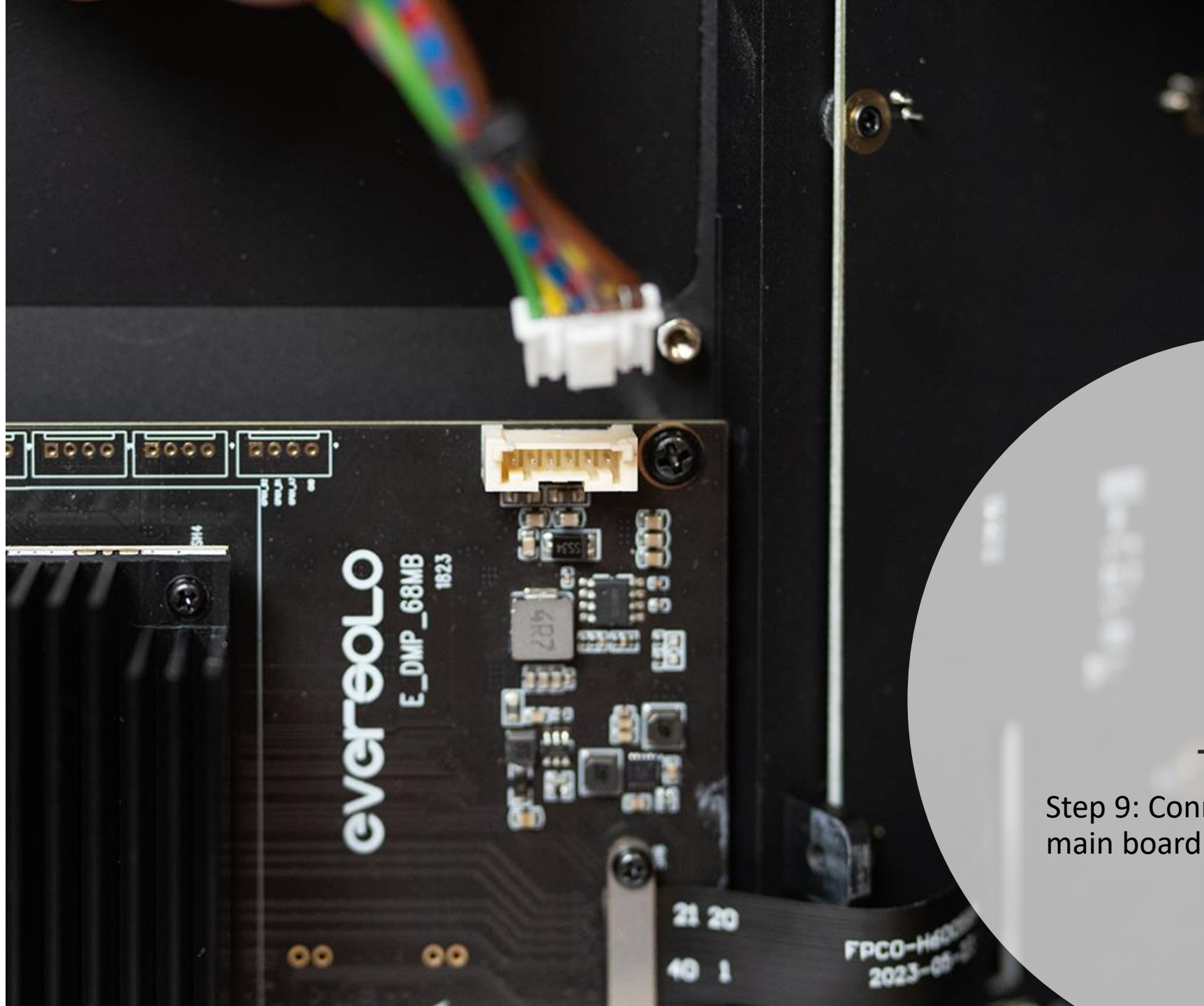
Result of step 7





Step 8: place and hold the bracings, one at a time, while tightening the screws from the outside.

- Do not use force



Step 9: Connect the DC cable to the main board.



---

Result of step 9

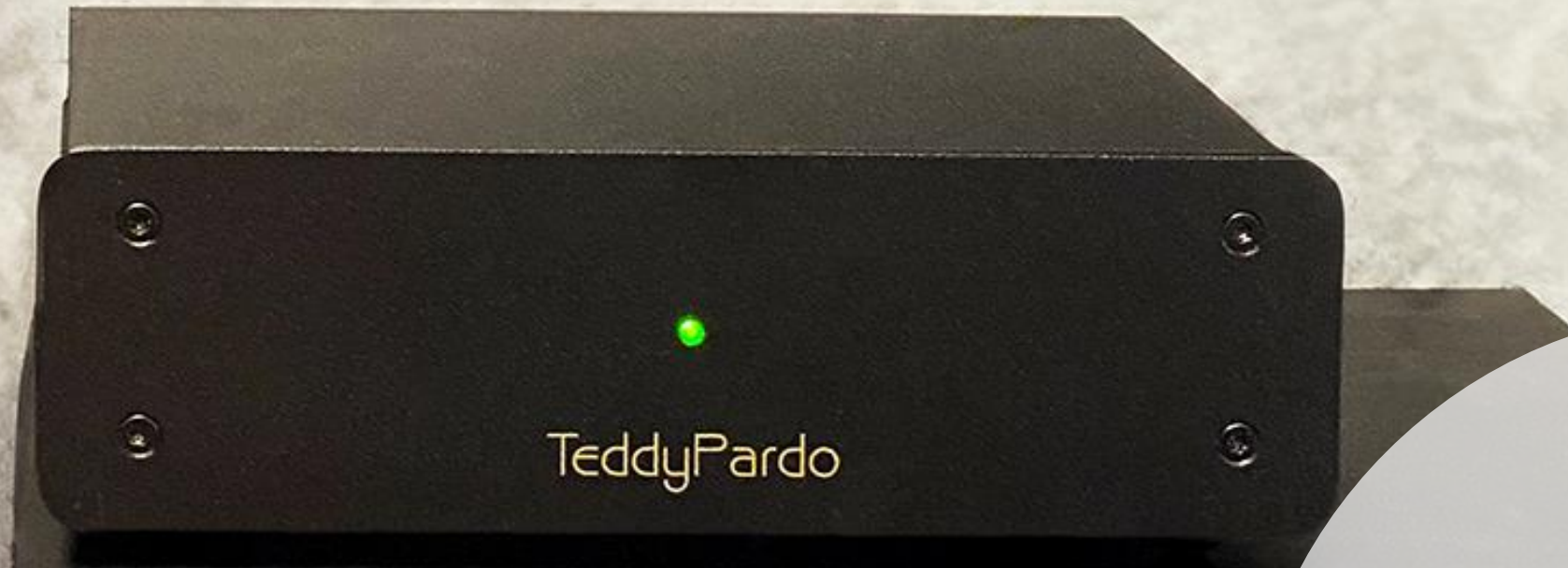




Step 10: Close the top cover, reverse step 3, then step 2, then step 1

---



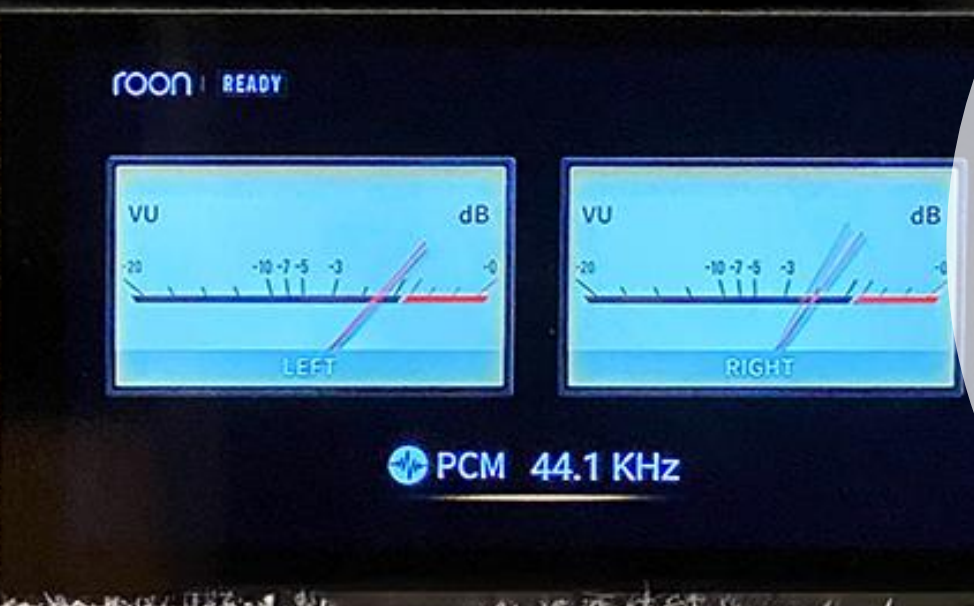


TeddyPardo



ever SOLO

DMP-A6



roon | READY



PCM 44.1 KHz



- Enjoy the music!